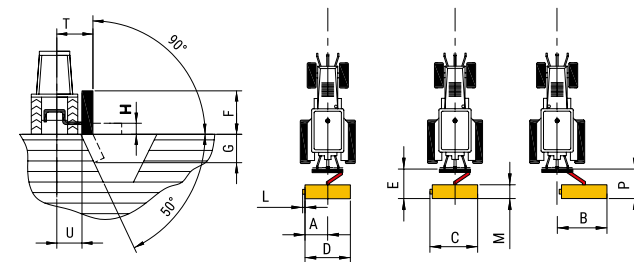




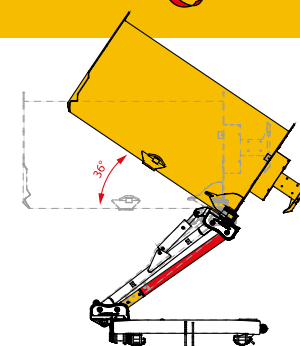
ROAD EDGES, DITCHES,
RIVER EDGES, PRUNINGS



PRIMATIST PLUS GS	A cm	B cm	C cm	D cm	E cm	F cm	G cm	H cm	L cm	M cm	P cm	S cm	T cm	U cm
185	80	290	211	182	218	281	173	55	15	107	250	5	179	126
200	80	299	220	201	218	290	182	55	15	107	250	5	179	126
220	80	319	240	221	218	310	202	55	15	107	250	5	179	126
260	80	352	273	254	218	343	235	55	15	107	250	5	179	126



DIRECTION OF ROTATION OF P.T.O.



OLEOPNEUMATIC ANTI-SHOCK DEVICE (optional)

In the event of meeting an obstruction, it protects the structural parts from potential breakages and accidental damage. As the head is forced back by the obstruction, some of the oil contained in the hydraulic cylinder of the machine transfers into the nitrogen pressurized accumulator which brings the machine back to working position once the obstacle has been passed



EXTRA
REACH

HARDOX
IN MY BODY



PRIMATIST PLUS GS

AGRICULTURAL SERIES



70 - 140 HP

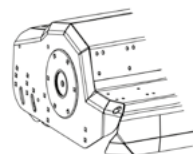
STRENGTH POINTS



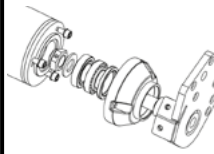
DOUBLE SKIN IN HARDOX



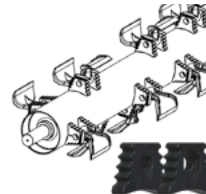
3 YEARS WARRANTY
ON CAST IRON COMPONENT



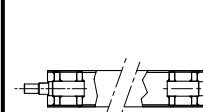
ROUNDED FRAME AND
CHAMFER ON THE OUTER END
OF HOOD



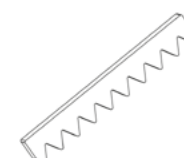
PROFESSIONAL REAR ROLLER
Ø 195 mm with 4 taper roller bearings,
mud scraper and central interchangeable
body, with 2 positions: 1) self-cleaning
2) rear



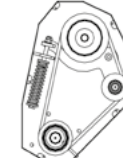
"VENTILATOR" ROTOR
electronically balanced. Forestry tool
holders moulded in boron steel.



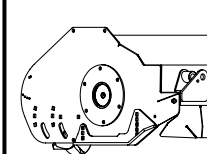
DOUBLE ROTOR SUPPORT





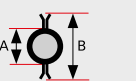
DOUBLE COUNTER KNIFE
Increased rows of counter knives hold the
material in for more complete shredding



AUTOMATIC BELTS TENSIONER
The automatic tensioning system as well
as allowing constant power transmission
reduces belts wear.



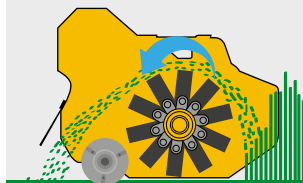
INTERNAL ROTOR BEARINGS
The internal positioning of the bearings
allows greater durability as it has greater
protection from impacts and impurities

PRIMATIST PLUS GS				185	200	220	260		
TECHNICAL SPECIFICATIONS									
Working width				181 cm	201 cm	221 cm	254 cm		
Machine weight				840 - 890 kg	860 - 910 kg	900 - 960 kg	950 - 1010 kg		
tools		Knives Max Ø 3,5 cm		N° 48	N° 48	N° 60	N° 60		
		Hammers Max Ø 5/6 cm Kg1,7		N° 16	N° 16	N° 20	N° 20		
rotor Ø			A	178x10 mm	178x10 mm	194x10 mm	194x10 mm		
			B	441 mm	441 mm	458 mm	458 mm		
N° Belts quad power				4	4	5	5		
CAT.				II	II	II	II		
RPM PTO	540	Rotor revolutions / peripheral tool speed		2300 rpm - 53,1 m/sec	2300 rpm - 53,1 m/sec	2025 rpm - 48,5 m/sec	2025 rpm - 48,5 m/sec		
HP max transmission				80 hp	80 hp	110 hp	110 hp		
Utilization				rear mounted					
TRACTOR REQUIREMENTS									
Minimum weight				2750 kg	2950 kg	3200 kg	3400 kg		
Minimum wheels setting				180 cm	200 cm	220 cm	220 cm		
PRIMATIST PLUS GS						185	200	220	260
MACHINE									
Extra side reach, up to 40 cm more off set						✓	✓	✓	✓
Gear box position						internal gearbox on top of hood			
Double skin in hardox						✓	✓	✓	✓
Cast iron pivot points						✓	✓	✓	✓
Double counter knife						✓	✓	✓	✓
Rounded frame with outer side beveled						✓	✓	✓	✓
Main pivot point in cast iron						✓	✓	✓	✓
Front safety flaps th. 6 mm						✓	✓	✓	✓
Professional rear roller Ø 195 mm with 4 taper roller bearings, mud scraper and central interchangeable body, with 2 positions: 1) self-cleaning 2) rear						✓	✓	✓	✓
Throwing adjustment of the shredded material						✓	✓	✓	✓
Reflectors						✓	✓	✓	✓
Side Skidsin Hardox						•	•	•	•
Catene di protezione						•	•	•	•
TRANSMISSION									
Wide angle cardan shaft						✓ 8 X 2150 1"3/8 Z6+1"3/8 Z6	✓ 8 X 2150 1"3/8 Z6+1"3/8 Z6	✓ 8 X 2150 1"3/4 Z6+1"3/8 Z6 TRACTOR SIDE	✓ 8 X 2150 1"3/4 Z6+1"3/8 Z6 TRACTOR SIDE
Tool holders - Forestry type						✓	✓	✓	✓
Ventilator rotor						✓	✓	✓	✓
Double rotor support						✓	✓	✓	✓
Tool screw in steel Ø 20 mm 12.9						✓	✓	✓	✓
Oscillating bearings with double column of balls						✓	✓	✓	✓
Free-wheel in gearbox						✓	✓	✓	✓
Automatic belt tensioner						✓	✓	✓	✓
Gear box 130 HP						-	-	•	•
Supplement for rotor with knife						•	•	•	•
SAFETY									
Mechanical safety and self-leveling system with double extra linkage						✓	✓	✓	✓
Oleopneumatic anti-shock device						•	•	•	•
HYDRAULIC SYSTEM									
Hydraulic side movement with adjustable ram and double acting anti-creep valve						✓	✓	✓	✓
Hydraulic angleing with safety tap for road transport						✓	✓	✓	✓

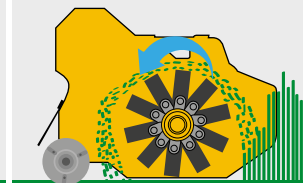
PRIMATIST **PLUS** GS

AGRICULTURAL SERIES

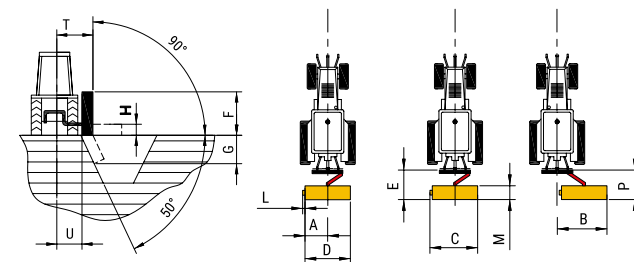
Self-cleaning roller position
unloading of mulched product behind the roller for faster working speed



Rear roller position
unloading of mulched product in front of the roller for better shredding



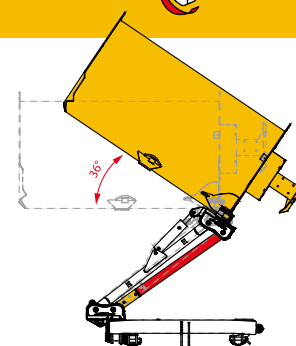
ROAD EDGES, DITCHES,
RIVER EDGES, PRUNINGS



MAGNUM PLUS GS OS	A cm	B cm	C cm	D cm	E cm	F cm	G cm	H cm	L cm	M cm	P cm	S cm	T cm	U cm
160	47	286	202	155	209	272	149	54	45	105	259	24	168	114
185	47	312	228	181	209	298	175	54	45	105	259	24	168	114
210	47	332	248	201	209	318	195	54	45	105	259	24	168	114
235	47	359	275	228	209	345	222	54	45	105	259	24	168	114
250	47	382	298	251	209	368	245	54	45	105	259	24	168	114



DIRECTION OF ROTATION OF P.T.O.



OLEOPNEUMATIC ANTI-SHOCK DEVICE (optional)

In the event of meeting an obstruction, it protects the structural parts from potential breakages and accidental damage. As the head is forced back by the obstruction, some of the oil contained in the hydraulic cylinder of the machine transfers into the nitrogen pressurized accumulator which brings the machine back to working position once the obstacle has been passed



EXTRA REACH

HARDOX
IN MY BODY



80 - 200 HP

MAGNUM PLUS GS OFF SET

PROFESSIONAL SERIES

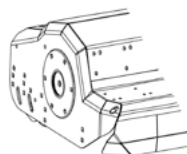
STRENGTH POINTS



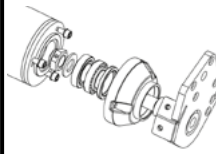
DOUBLE SKIN IN HARDOX



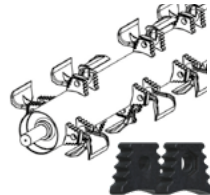
3 YEARS WARRANTY
ON CAST IRON COMPONENT



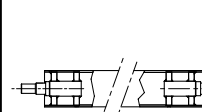
ROUNDED FRAME AND
CHAMFER ON THE OUTER END
OF HOOD



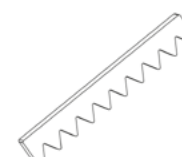
PROFESSIONAL REAR ROLLER
Ø 195 mm with 4 taper roller bearings,
mud scraper and central interchangeable
body, with 2 positions: 1) self-cleaning
2) rear



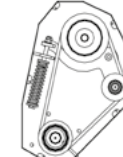
"VENTILATOR" ROTOR
electronically balanced. Forestry tool
holders moulded in boron steel.



DOUBLE ROTOR SUPPORT





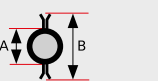
DOUBLE COUNTER KNIFE
Increased rows of counter knives hold the
material in for more complete shredding



AUTOMATIC BELTS TENSIONER
The automatic tensioning system as well
as allowing constant power transmission
reduces belts wear.



EXTERNAL ROTOR SUPPORT
IN PRESSED STEEL
The external rotor support allows the easy
dismantling / replacement of the rotor and
/ or the bearings

MAGNUM PLUS 6S OFF SET				160	185	210	235	250
TECHNICAL SPECIFICATIONS								
Working width				155 cm	181 cm	201 cm	228 cm	251 cm
Machine weight				1060 - 1110 kg	1090 - 1140 kg	1120 - 1170 kg	1160 - 1210 kg	1185 - 1235 kg
tools		Knives Max Ø 3,5 cm		N° 36	N° 48	N° 48	N° 60	N° 60
		Hammers Max Ø 8 cm - Kg 2,1		N° 12	N° 16	N° 16	N° 20	N° 20
rotor Ø			A	194x12.5 mm	194x12.5 mm	194x12.5 mm	194x12.5 mm	194x12.5 mm
			B	452 mm	452 mm	452 mm	452 mm	452 mm
N° Belts quad power				4	4	4	5	5
CAT.				II-III	II-III	II-III	II-III	II-III
RPM PTO	540	Rotor revolutions / peripheral tool speed	2250 rpm - 53,2 m/sec	2250 rpm - 53,2 m/sec	2250 rpm - 53,2 m/sec	2250 rpm - 53,2 m/sec	2250 rpm - 53,2 m/sec	2025 rpm - 47,9 m/sec
HP max transmission				90 hp	110 hp	110 hp	110 hp	110 hp
Utilization				rear mounted				
TRACTOR REQUIREMENTS								
Minimum weight				3000 kg	3200 kg	3500 kg	3900 kg	4100 kg
Minimum wheels setting				200 cm	220 cm	220 cm	220 cm	220 cm

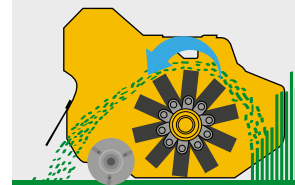
MAGNUM PLUS GS OFF SET			160	185	210	235	250
MACHINE							
Extra side reach, up to 40 cm more off set			✓	✓	✓	✓	✓
Gear box position			external gearbox on end of hood				
Double skin in hardox			✓	✓	✓	✓	✓
Cast iron pivot points			✓	✓	✓	✓	✓
Double counter knife			✓	✓	✓	✓	✓
Rounded frame with outer side beveled			✓	✓	✓	✓	✓
Main pivot point in cast iron			✓	✓	✓	✓	✓
Front safety flaps th. 6 mm			✓	✓	✓	✓	✓
Professional rear roller Ø 195 mm with 4 taper roller bearings, mud scraper and central interchangeable body, with 2 positions: 1) self-cleaning 2) rear			✓	✓	✓	✓	✓
Throwing adjustment of the shredded material			✓	✓	✓	✓	✓
Catarifrangenti			✓	✓	✓	✓	✓
Side skids in Hardox			•	•	•	•	•
Front chain protections			•	•	•	•	•
TRANSMISSION							
Wide angle cardan shaft 8 X 2150 1"3/4 Z6+1"3/8 Z6 Tractor side			✓	✓	✓	✓	✓
Tool holders - Forestry type			✓	✓	✓	✓	✓
Ventilator rotor			✓	✓	✓	✓	✓
Double rotor support			-	-	-	✓	✓
Tool screw in steel Ø 20 mm 12.9			✓	✓	✓	✓	✓
Oscillating bearings with double column of balls			✓	✓	✓	✓	✓
Free-wheel in gearbox			✓	✓	✓	✓	✓
Automatic belt tensioner			✓	✓	✓	✓	✓
Gear box 130 HP			•	•	•	•	•
Supplemento montaggio coltelli			•	•	•	•	•
SAFETY							
Mechanical safety and self-leveling system with double extra linkage			✓	✓	✓	✓	✓
Oleopneumatic anti-shock device			•	•	•	•	•
HYDRAULIC SYSTEM							
Hydraulic side movement with adjustable ram and double acting anti-creep valve			✓	✓	✓	✓	✓
Hydraulic angling with safety tap for road transport			✓	✓	✓	✓	✓

✓ STANDARD EQUIPMENT | • OPTIONAL EQUIPMENT | - NOT AVAILABLE

MAGNUM **PLUS** GS

OFF SET PROFESSIONAL SERIES

Self-cleaning roller position
unloading of mulched product behind the roller for faster working speed



Rear roller position
unloading of mulched product in front of the roller for better shredding

