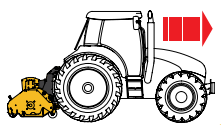
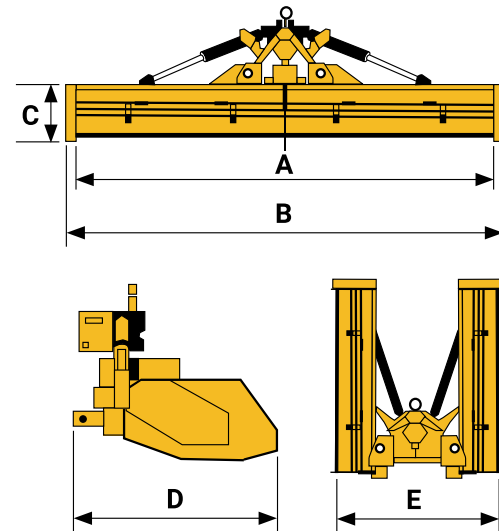




GRASS MAINTENANCE, FIBROUS PLANTS, STRAW, COTTON, POTATOES, CORN, ARTICHOKE, WIDE GREEN AREAS, SET ASIDE, PASTURES, SUNFLOWER STALKS, SORGHUM, TOBACCO, SUGAR CANE, FIELDS OF PINEAPPLE



WKO
PROFESSIONAL SERIES



120 - 200 HP



WKO	A cm	B cm	C cm	D cm	E cm
4400	442	491	86	180	255
5000	491	540	86	180	255
6000	600	645	86	180	255



PUNTI DI FORZA



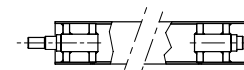
ELECTRONICALLY BALANCED ROTOR



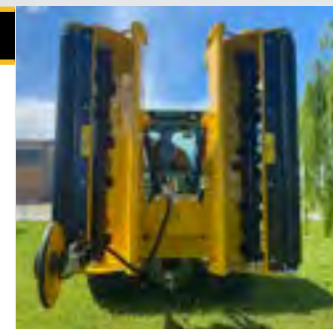
OSCILLATING BEARINGS WITH DOUBLE COLUMN OF BALLS



FREE WHEEL IN THE GEAR BOX



DOUBLE FLANGE IN THE ROTOR



WKO		4400	5000	6000
TECHNICAL SPECIFICATIONS				
Working width		442 cm	491 cm	600 cm
Machine weight		2150 - 2430 kg	2330 - 2620 kg	2800 - 2950 kg
tools	Knives <i>standard</i>	N° 144	N° 156	N° 204
	Hammers <i>optional</i>	N° 48	N° 52	N° 68
Rotor Ø	A	194 mm	194 mm	194 mm
	B	666 mm	666 mm	666 mm
N° Belts		5+5	5+5	5 + 5
CAT.		II-III	II-III	II-III
RPM PTO	1000	Rotor revolutions / peripheral tool speed 1886 rpm 60 m/sec	1886 rpm 60 m/sec	1886 rpm 60 m/sec
HP max transmission		180 hp	180 hp	180 hp
Utilization		Rear mounted		

WKO	4400	5000	6000
MACHINE			
Removable tailgate for maintenance	✓	✓	✓
Automatic locking system	✓	✓	✓
Safety lock for hydraulic and automatic road transport	✓	✓	✓
Rear roller Ø 195 mm with taper roller bearings, with mud scraper	✓	✓	✓
Height adjustable side skids	✓	✓	✓
Road lights	•	•	•
Wheels	•	•	•
Central disc for cutting grass	•	•	•
TRANSMISSION			
Transmission in oil bath with free wheel	✓	✓	✓
Toothed belts	✓	✓	✓
Electronically balanced rotor	✓	✓	✓
Oscillating bearings with double column of balls	✓	✓	✓
Safety valves on the cylinders	✓	✓	✓
Cardan shaft	•	•	•
Extra cost for rotor with hammers	•	•	•
HYDRAULIC SYSTEM			
Hydraulically adjustable double Rear bonnet (CE not available)	•	•	•

WKO
PROFESSIONAL SERIES

